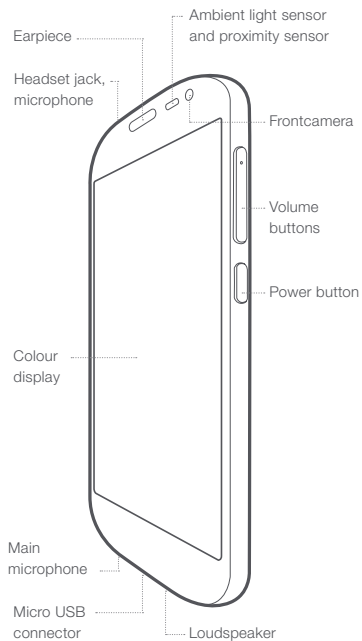


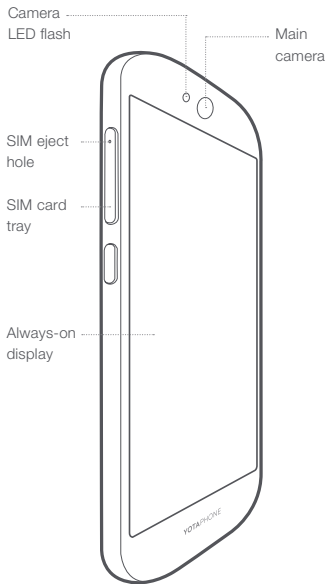
YOTAPHONE

## ENGLISH

## COLOUR DISPLAY



## ALWAYS-ON DISPLAY



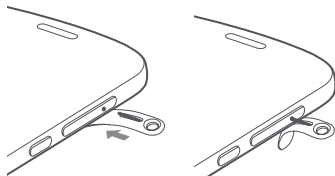
## INSERTING SIM CARD

YotaPhone uses a nano-SIM card. If you don't have a suitable SIM card, contact your service provider to get one.

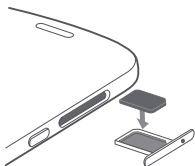
The SIM card tray is located behind the volume key and can be opened with the SIM eject tool included in the package.

### To insert SIM card:

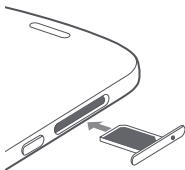
1. Insert the SIM eject tool to the SIM eject hole in the volume key and push lightly until the SIM card tray is released.



2. Insert the SIM card into the tray with the contact area facing down.



3. Place the SIM card tray carefully back to its slot and push until it locks.



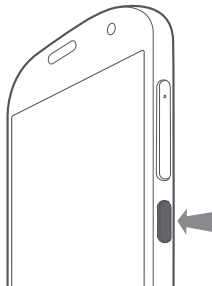
## SWITCHING YOUR YOTAPHONE ON/OFF

### To switch your YotaPhone on:

1. Press the Power button.
2. Hold until the phone starts.

### To switch your YotaPhone off:

1. Press and hold the Power button.
2. Select the Power off option.
3. Tap OK.



## LOCKING/UNLOCKING THE DISPLAYS

When you hold your YotaPhone, it recognises which display is upwards.

### **To unlock the always-on display:**

1. Hold the phone with the display facing up.
2. Press the Power button OR slide the lock icon.

### **To unlock the colour display:**

1. Hold the phone with the display facing up.
2. Press the Power button OR swipe from the bottom.
3. Slide the lock icon.

### **To lock a display**

Press the Power button OR tap the display with three or more fingers.

## ALWAYS-ON DISPLAY

Never miss anything important. With the always-on display, the most important information will remain visible even with an empty battery.

The always-on display consists of panels that you can customise to your liking with widgets and personalised pictures. You can open a widget to full-screen mode by tapping it, and move from one panel to another by swiping the display. In addition to widgets, you can use any application on the always-on display through the mirroring mode.

To familiarise yourself with the always-on display features and make the most of your YotaPhone, see the Tutorial on your device.

## TECHNICAL SPECIFICATION

### OS

Android™ 4.4, KitKat®

### CPU

Qualcomm®

Snapdragon™ 800

2.26 GHz quad-core

### Dimensions

144.9 × 69.4 × 8.95 mm

### Weight

145 g

### Colour display

5" AMOLED, Full HD

1920 × 1080

16M colours

### Always-on display

4.7" Electronic Paper

Display, 960 × 540

16 level greyscale

### Network

LTE CAT4 B3 MIMO

B7 MIMO

B20 MIMO

UMTS/HSPA+/DC-HSDPA

850/900/1900/2100 MHz

GSM/EGPRS 850/900/

1800/1900 MHz

### Camera

Main camera 8MP AF

LED flash

Front camera 2.1 MP

### Memory

2 GB RAM

32 GB eMMC

### Connectivity

Micro USB 2.0

(SlimPort®)

3.5 mm AV connector

Bluetooth® 4.0

Wi-Fi 802.11 a/b/g/n/ac

A-GPS + GLONASS,

NFC

### Battery

2500 mAh

### Other

Nano-SIM

FM radio

## PRODUCT INFORMATION

### Network Support

You can use YotaPhone on the LTE 800, 1800 and 2600 MHz networks, on UMTS 850, 900, 1900 and 2100 MHz networks, and on the GSM 850, 900, 1800 and 1900 MHz networks. To do this, you need a subscription with your service provider.

### Electronic Paper Display (EPD) Operating Temperature

Temperatures lower than 0 °C or higher than 50 °C affect the performance of the EPD. Do not use your device in high or low temperatures.

### Battery and charging

This device has an internal, rechargeable battery that cannot be removed. The battery can be replaced only by a service facility approved by Yota Devices.

To charge the device, use only charger adapters and data cables approved by Yota Devices.

Other chargers and cables can damage the device or cause the battery to explode.

## Product Safety, Care and Maintenance

See Product and Safety Information in the YotaPhone User Guide at [yotaphone.com](http://yotaphone.com).

## Radio Frequency Exposure Information

Your YotaPhone is a radio transmitter and receiver. It meets international guidelines for exposure to radio waves. The highest SAR value for this device is 0.287 W/kg when tested at the ear (tests done following EN 50360:2001/A1:2012 & EN 62209-1:2006 standards) and 0.268 W/kg when worn on the body (tests done following EN 50360:2001/AC & EN 62209-1:2006 standards).

For more information, see Product and Safety Information in the YotaPhone User Guide.



### WARNING:

To avoid possible hearing damage, do not listen at high volume levels for long periods.

## Recycling and Disposal

Always recycle or dispose your electronic products, batteries, accessories, and packaging materials according to your local regulations. Do not dispose the device as household waste.

## Manufacturer's Warranty

Full details of the warranty on this YotaPhone are displayed on our website at [yotaphone.com](http://yotaphone.com). The website also provides contact details for Yota Devices repair and service centres, and a description of the procedure to be followed regarding the YotaPhone warranty. As a consumer, you may have other legal rights and protections including warranties implied by statute. The YotaPhone warranty does not in any way limit, restrict or otherwise affect such rights.



© 2014 Yota Devices. All rights reserved.

Android is a trademark of Google Inc.

For support, latest version of this quick guide, and full user guide, visit our website: [yotaphone.com](http://yotaphone.com)